



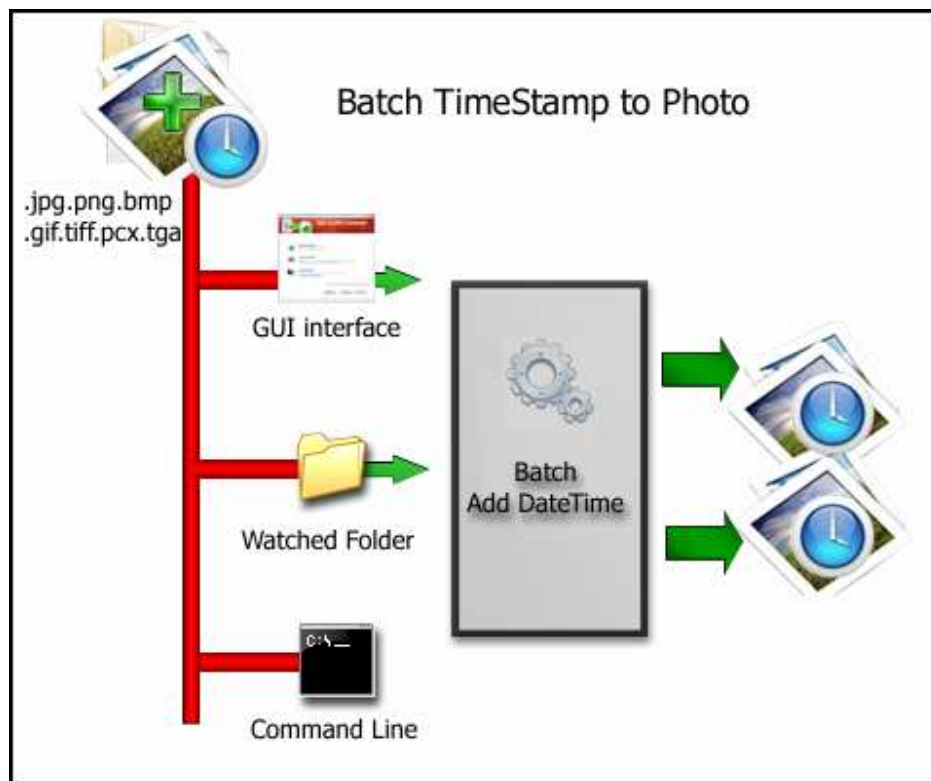
Note: This product is distributed on a 'try-before-you-buy' basis. All features described in this documentation are enabled. The registered version does not have time limit

About Boxoft Batch TimeStamp to Photo

Boxoft Batch TimeStamp to Photo: jpg date time stamp software

Boxoft Batch TimeStamp to Photo is a simple, lightning-fast and powerful photo watermark and conversion tool that lets you to batch add date stamps or memory labels to photos with one mouse click. Boxoft Batch TimeStamp to Photo automatically reads the date of the original picture from a file and places the and/or any text label to your photo.

Boxoft Batch TimeStamp to Photo Running in GUI and keeps running in batch mode (as command-line utility), **a command line version is included also.**





Boxoft Batch TimeStamp to Photo features:

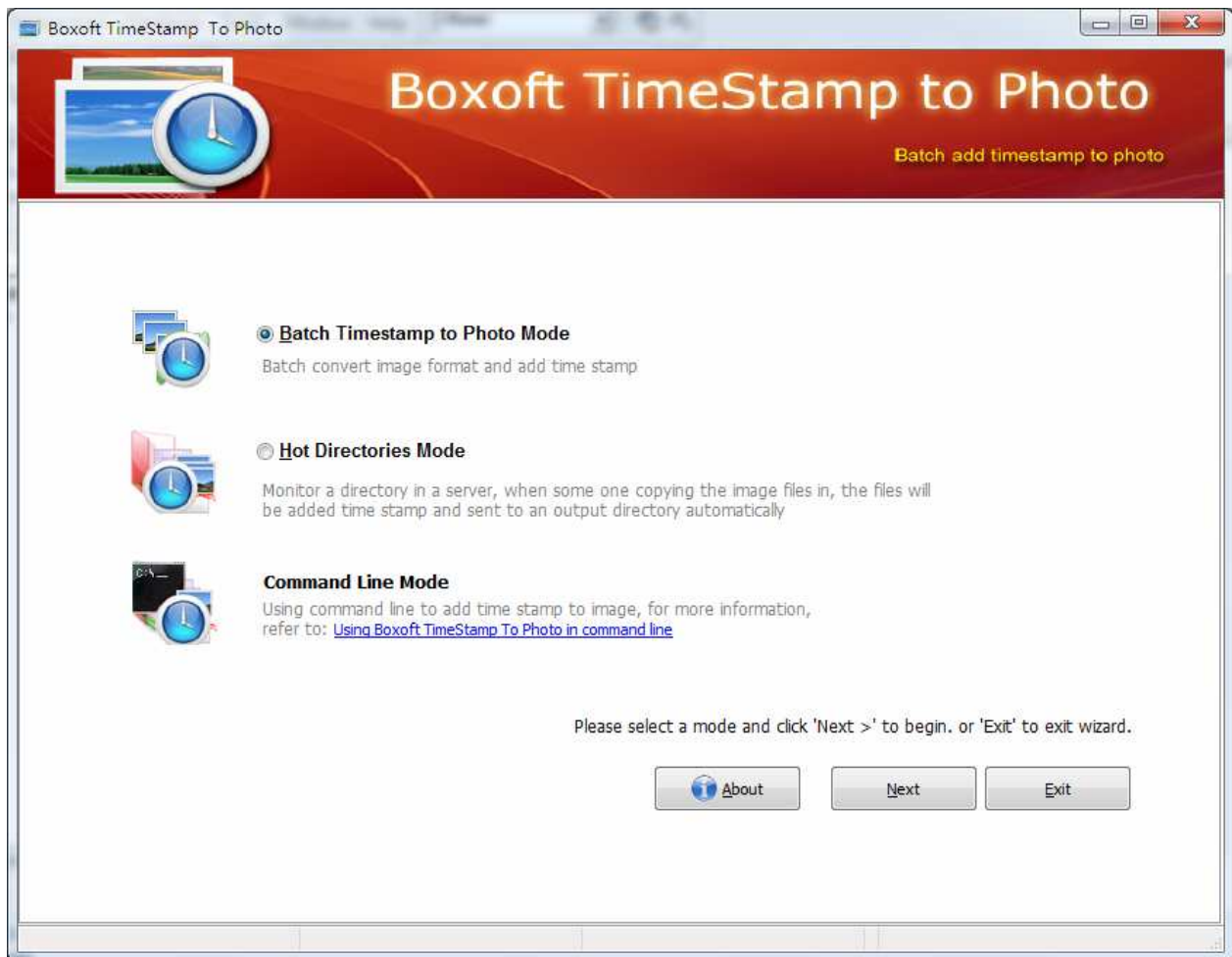
- Batch photo processing.
- Add any text label and timestamp to your photos.
- Stamp location, size, color, and font are fully customizable.
- Rename and sort photos automatically.
- EXIF date and time support.
- EXIF GPS tags support.
- All stamped photos are saved to a different folder so original photos are not modified.

Using Boxoft Batch TimeStamp to Photo

Boxoft Batch TimeStamp to Photo can be started either by launching the application via a desktop shortcut, or directly from within Windows/Windows Explorer.



When you start the program, you will be presented with the primary screen from which all actions are taken.



Using Boxoft Batch TimeStamp to Photo in command line

Boxoft Batch TimeStamp to Photo can be used in command line also.

Usage:

**Boxoft Timestamp To Photo Command Line Usage:**

TimetophotoCmd <Input Filename> <Output Filename> [Option]

Parameters

<Input Filename>: Input filename.
<Output Filename>: Output filename.

[Option]:

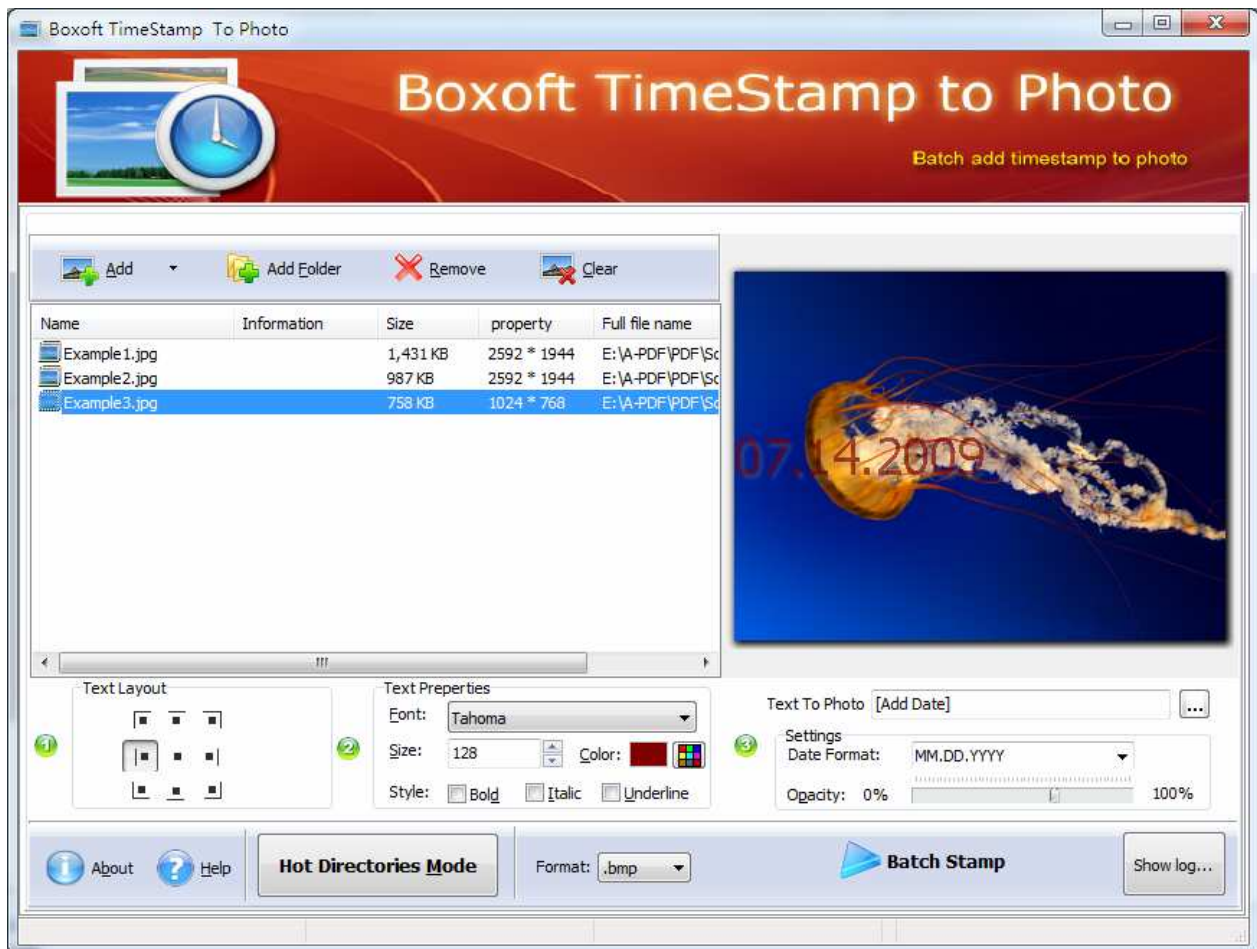
-T: Stamp font text.
-P<Position>: Stamp position.
Value must be: LT, LM, LB, MT, MM, MB, RT, RM and RB.
-N<FontName>: Stamp font name, example, Tahoma, Webdings, Wingdings.
-S<FontSize>: Stamp font size.
-C<FontColor>: Stamp font color, example, Red, White, Blue, Green.
-O<Opacity>: Stamp opacity, value must be 0 to 255.
-B: Font bold.
-I: Font italic.
-U: Font underline.

Return meaning:

-1: Fail.
0: Success.
1: Show help.
2: Parameters count error.
3: Cannot find input file.
4: Input file format error.
5: Output directory is not exists.
6: Output file format error.
7-12: Parameters error.
99: Unexpected error.


Examples:**Batch Mode**

Select the option **Batch Time Stamp Mode** and push the button **Next >**, a Batch Mode window will be opened.




Adding Photo Files




Clicking the **Add** icon  then will open the standard file browse and select window. From that window you can navigate to the folder and find the files you want to add to the list of photos to be worked.

Alternatively, if you are using Windows Explorer to locate files, you have the convenience of being able to 'drag and drop' files into the document window.

Boxoft Batch TimeStamp to Photo even allows you to select all photos in a particular directory/folder by using the **Add Folder**  button! Adding a directory also supports sub-folders.

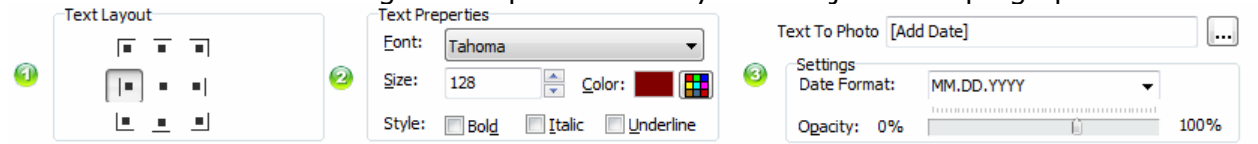


Each added photos file is displayed in the document list window. You can listen any of the wav files in the window by 'clicking' them.

You can click the **Remove** icon  to remove selected files in list or you can clear all Docs by clicking the **Clear** icon

Timestamp Settings

The STAMP PHOTOS configuration panel allows you to adjust stamping options.



You can set the position of the stamp by clicking the left mouse button in an arbitrary position of a photo or by choosing one of the default corner positions using the STANADR PLACES panel

You can also edit the SIZE, COLOR, FONT, STYLE fields to modify the corresponding parts of the stamp.

The stamp text can be edited in the TEXT TO PHOTO field. This is a stamp template – all the tags in square brackets will be replaced by photo-specific values. For instance, in TEXT TO PHOTO = "Birthday [PHOTO_DATE]", each [PHOTO_DATE] will be replaced by the date and time the picture was taken according to the format selected in the DATE FORMAT field.

The DATE FORMAT field defines the format of the date added to photos.

The format of the GPS position can be configured in the main program settings window.

Batch Add Time to Photo

Click the **Batch Stamp** icon to stamp all of photos in the photos list windows to Specify stamp options and save the resultant file to a directory which you selected.



Ending Your Session

When you have completed your work, choose the **File** option and select **Exit** from the dropdown list.

More information please visit: <http://www.boxoft.com>